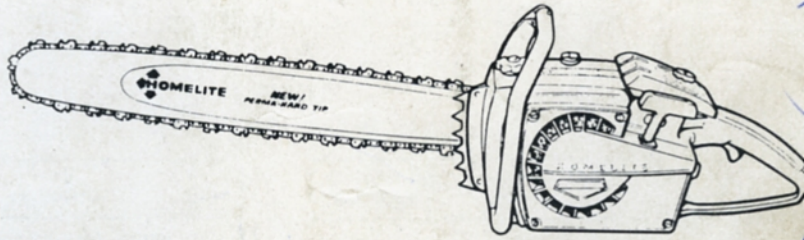


PARTS LIST

XL 903E & EAM

HOMELITE®



XL

CHAIN SAWS

PART NO. 24245

Printed in U.S.A.

968

A

Holyman's.
Hissett AUG 15 1960.

1 R 230/12.

Smilko heater. →

HOMELITE XL-903E & EAM

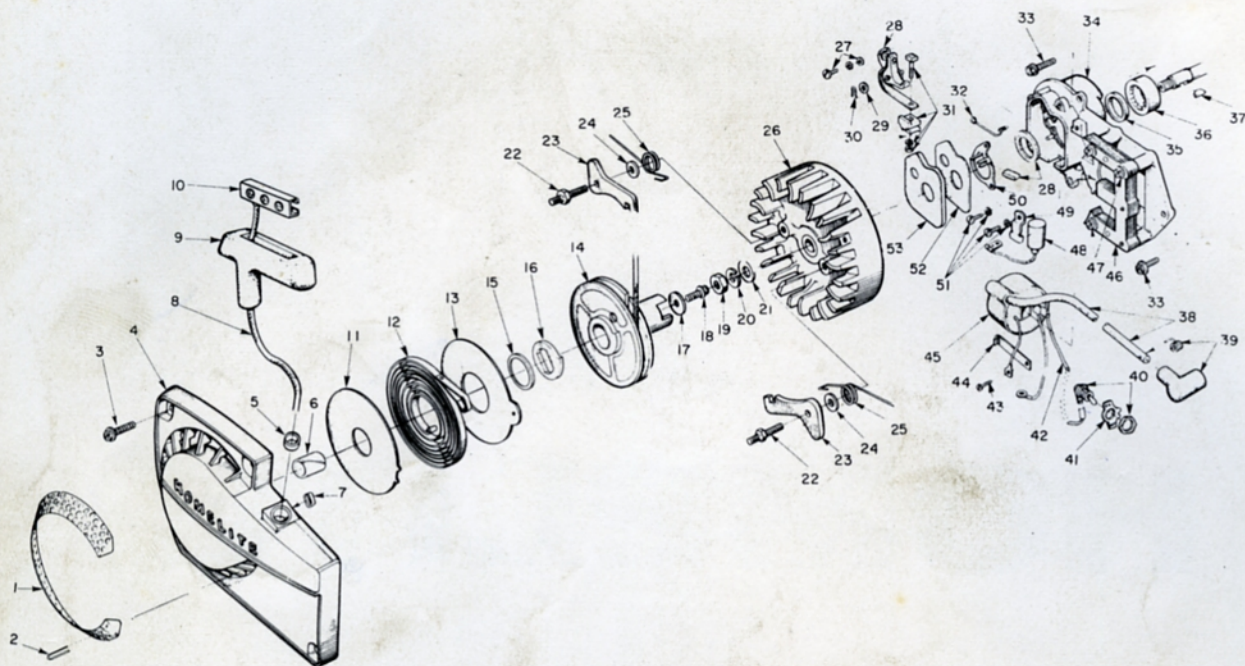


FIGURE 1

No.	Description	Part No.	XL 903	
			E	Qty.
1	SCREEN - air	A-64421	x	1
2	Includes: FASTENER - screen	64419-1	x	6
3	SCREW - hex, 12-24 x 5/8	80676	x	4
4	HOUSING - fan	A-64504	x	1
5	Includes: BUSHING - rope	59313	x	1
6	BUSHING - starter post	64443	x	1
7	BUSHING - rewind spring	65830	x	1
8	ROPE - starter	58806	x	1
9	GRIP - rope	58915	x	1
10	INSERT	58847	x	1
11	SHIELD - spring (inner)	63566	x	1
12	SPRING - rewind	63268-A	x	1
13	SHIELD - spring (outer)	63565-A	x	1
14	PULLEY & CUP ASSEMBLY	A-64446	x	1
15	Includes: BUSHING - spring lock	64400	x	1
16	LOCK - spring	64049-A	x	1
17	WASHER - retaining	58763	x	1
18	SCREW - hex, 10-32 x 1/2	80648	x	1
19	NUT - hex, 3/8-24	81124	x	1
20	WASHER - lock, 3/8	83102	x	1
21	WASHER - flat, 3/8	84010-1	x	1
22	STUD - pawl	58757-B	x	2
23	PAWL - starter	58756	x	2
24	WASHER	58851	x	2
25	SPRING - pawl	58758	x	2
26	ROTOR	63406	x	1

No.	Description	Part No.	XL 903	
			E	Qty.
27	SCREW GROUP - points	76421	x	1
28	POINT SET - w/felts	A-63631	x	1
29	Includes: WASHER - point	28028	x	1
30	CLIP - post	28008	x	1
31	TERMINAL BLOCK GROUP	A-58934	x	1
32	SPRING - cover (clip)	76413	x	1
33	SCREW - hex, 12-24 x 11/16	80751	x	4
34	PLATE - back	A-63633	x	1
35	Includes: SEAL	58688-A	x	1
36	BEARING - roller	63195	x	1
37	KEY	75078	x	1
38	LEAD - hi tension	63632	x	1
39	TERMINAL - spark plug	A-33055	x	1
40	SWITCH - w/nut	A-57650-3	x	1
41	PLATE - "On - Off"	72085-A	x	1
42	LEAD - ground	A-59031	x	1
43	SCREW - coil clip	58872	x	1
44	CLIP - coil retaining	63726	x	1
45	COIL - ignition	63625	x	1
46	CORE - coil	63630	x	1
47	SCREW - core	64021	x	4
48	CONDENSER - ignition	63626	x	1
49	CLAMP - condenser	63627	x	1
50	RETAINER - felt	63628	x	1
51	SCREW	55411	x	3
52	GASKET - cover	63316	x	1
53	COVER - breaker box	63317	x	1

HOMELITE XL-903E & EAM

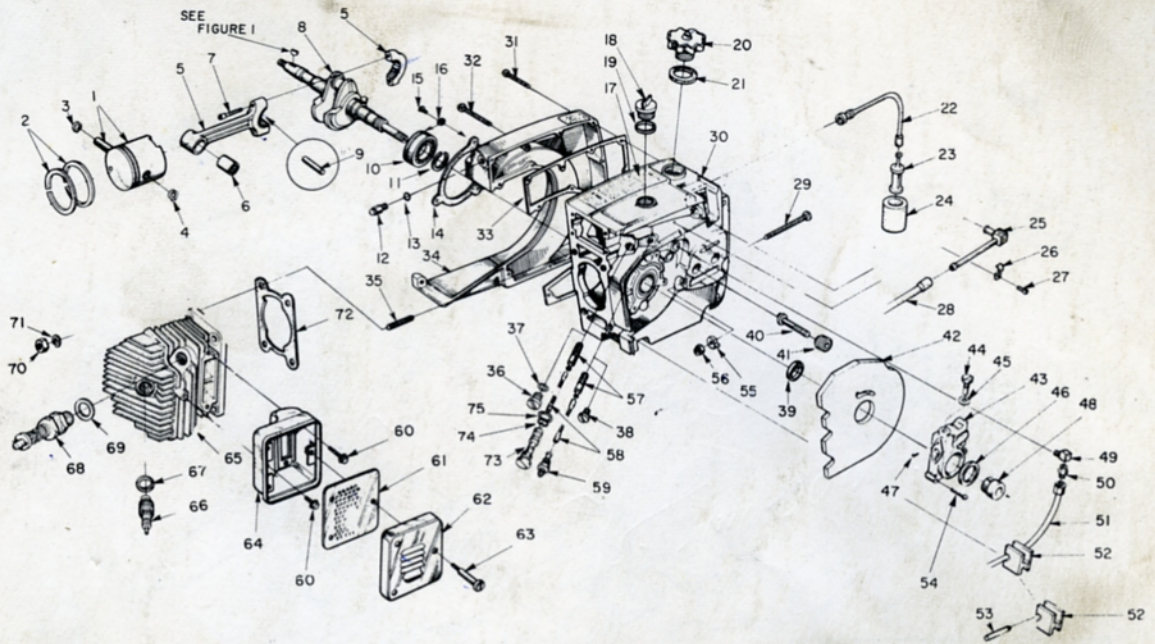


FIGURE 2

No.	Description	Part No.	XL 903		No.	Description	Part No.	XL 903			
			F	EAM				F	EAM		
*1	PISTON & PIN - 2 1/16" bore Includes: RING - piston	<i>A67989-1</i> A-65931 55537	x	x	1	37	WASHER	58138	x	x	1
2	RING - retaining	55095	x	x	2	38	PLUG - pipe	28097	x	x	1
3	RING - retaining	64742	x	x	1	39	SEAL	58688-A	x	x	1
4	RING - retaining	A-63309	x	x	1	40	STUD - guide bar	59764-A	x	x	2
5	ROD - connecting	59351	x	x	1	41	INSERT - threaded	59896-A	x	x	2
6	Includes: BEARING - needle	80805	x	x	2	42	SHIELD - sawdust	A-64715	x	x	1
7	SCREW - soc, 8-32 x 9/16	59625-2	x	x	1	43	PUMP - automatic	A-64384	x	x	1
8	CRANKSHAFT	A-64621	x	x	1	44	Includes: GASKET - cam screw	59736	x	x	1
9	BEARING - needle (28 rollers)	58190-S	x	x	1	45	SCREW - cam	59737	x	x	1
10	BEARING - ball	58319-A	x	x	1	46	SEAL - felt	59926	x	x	1
11	RING - retaining	A-65608	x	x	1	47	SCREW - pan, 4-40 x 1/4	80919	x	x	2
12	VALVE - check	65613	x	x	1	48	GEAR - worm	59675	x	x	1
13	"O" RING	63319	x	x	1	49	CONNECTOR - elbow	31734	x	x	1
14	GASKET - sealing	59704	x	x	2	50	FITTING - straight	65696	x	x	1
15	SCREW - bearing retaining	64144	x	x	1	51	LINE - oil	A-65705	x	x	1
16	WASHER - lock	59705	x	x	2	52	GROMMET - oil line	65357	x	x	1
17	DECAL - caution	64144	x	x	1	*53	PLUG - oil line	65950	x	x	1
18	CAP - oil (vented)	A-64310	x	x	1	54	SCREW - fil., 8-32 x 3/4	80248	x	x	3
19	Includes: GASKET VALVE - vent (not shown)	56607 63718	x	x	1	55	PIN - guide bar adjusting	58783-1	x	x	1
20	CAP - fuel	A-65809	x	x	1	56	NUT - lock, 1/4-20	81108	x	x	1
21	Includes: GASKET	58957	x	x	1	57	FILTER - oil	A-64293	x	x	1
22	LINE - flexible fuel	65593	x	x	1			A-64293	x	2	
23	FILTER - fuel	A-59251	x	x	1	58	LINE - oil pickup	59000	x	x	1
24	Includes: FILTER	59253-1	x	x	1			59000	x	2	
25	LINE - fuel	A-65596	x	x	1	59	CONNECTOR - oil filter	65695	x	x	1
26	CLAMP - fuel line	65597-1	x	x	1	60	SCREW - hex, 12-24 x 5/8	80978	x	x	3
27	SCREW - pan, 6-32 x 5/16	80605	x	x	1	61	BAFFLE - muffler	63521-A	x	x	1
28	LINE - fuel	65718	x	x	1	62	CAP - muffler	63520-3	x	x	1
29	SCREW - guide bar adjusting	63367	x	x	1	63	SCREW - shoulder	63855-A	x	x	3
30	CRANKCASE & TANK Includes: GASKET (not shown) CAP (not shown)	A-65879 58338 58339	x	x	1	64	BODY - muffler	A-63535-1A	x	x	1
		82146	x	x	6	65	CYLINDER - 2 1/16" bore	65605-1	x	x	1
31	SCREW - fil., 8-32 x 5/8	82147	x	x	9	66	SPARK PLUG <i>x40 DANARMI</i>	65547-S	x	x	1
32	SCREW - fil., 8-32 x 1 3/4	65391	x	x	1	67	Includes: GASKET	25038	x	x	1
33	GASKET - fuel tank	64825-4	x	x	1	68	VALVE - decompression	A-65883	x	x	1
34	COVER - fuel tank	55871	x	x	4	69	Includes: WASHER - copper	65825	x	x	1
35	STUD	63115	x	x	1	70	NUT - hex, 1/4-28	81065-2	x	x	4
36	PLUG					71	WASHER - lock, 1/4	83009	x	x	4
						72	GASKET - cylinder	63778	x	x	1
						73	TUBE - oil line	63452-A	x	x	1
						74	"O" RING	58406	x	x	1
						75	GASKET - oil line tube	63751	x	x	1

HOMELITE XL-903E & EAM

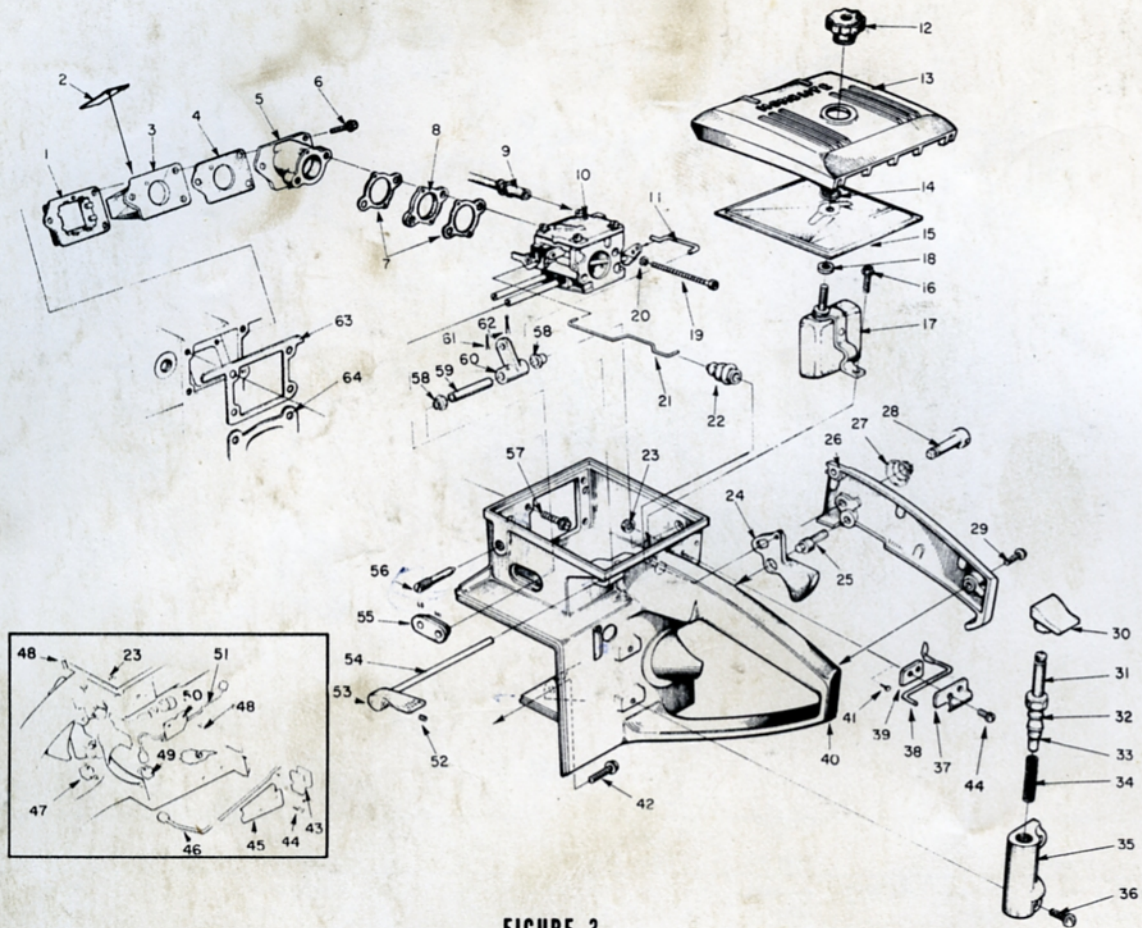


FIGURE 3

No.	Description	Part No.	XL 903 E EAM	Qty.
1	RETAINER	63370	x x	1
2	VALVE - reed	63166	x x	4
3	SEAT - reed valve	63371-A	x x	1
4	GASKET - seat	65483	x x	1
5	SPACER - reed valve seat	63019-1A	x x	1
6	SCREW - shoulder	65489	x x	3
7	GASKET - carburetor	63254	x x	2
8	SPACER - carburetor	63256	x x	1
9	LINE - fuel	65718	x x	1
10	CARBURETOR	A-65578	x x	1
11	LINK - choke	65508	x x	1
12	NUT - cover mounting	A-63582-A	x x	1
13	COVER - air filter	63634-1	x x	1
14	RING - retainer	58319-A	x x	1
15	FILTER ELEMENT - air	63341	x x	1
16	SCREW - hex, 12-24 x 1/2	80821	x x	1
17	DEFLECTOR - air, w/bracket	A-63593	x x	1
18	Includes: GASKET - mounting nut	58392-1	x x	1
19	SCREW - hex, 10-32 x 2	80965	x x	2
20	WASHER - lock, #10	83046	x x	2
21	ROD - throttle	63266	x x	1
22	BOOT - throttle rod	58348	x x	1
23	NUT - lock, 6-32	81126	x	2
		81126	x	6
24	TRIGGER - throttle	65745	x x	1
25	PIN - throttle lock adjusting	65719	x x	1
26	COVER - throttle handle	A-65882-A	x x	1
	Includes: BUSHING - throttle lock	65878	x x	1
27	SPRING - lock	65714	x x	1
28	PIN - throttle lock	65822	x x	1
29	SCREW - pan, 8-32 x 1/2	80560	x x	2
30	BUTTON	63622	x	1
31	PLUNGER - oil pump	A-57834-16	x	1
32	Includes: "O" RING - shaft	59074	x	1
33	"O" RING - plunger	74388	x	1

No.	Description	Part No.	XL 903 E EAM	Qty.
34	SPRING - plunger	59293	x	1
35	BODY - oil pump	63343-5	x	1
36	SCREW - pan, 8-32 x 3/8	80577	x	2
	SCREW - pan, 8-32 x 7/8	80568	x	2
37	CLAMP - lever	65821-1	x x	1
38	LEVER - poppet valve	65630	x x	1
39	PLATE	65629-1	x x	1
40	HANDLE - throttle	A-65881-A	x x	1
41	Includes: PLUG - accordian	65889	x	2
42	SCREW - hex, 12-24 x 7/8	80891	x x	1
43	GROMMET - oil line	65357	x x	1
44	SCREW - pan, 6-32 x 3/8	80571	x	2
		80571	x	6
45	CLAMP - oil line	65513-1	x	1
46	LINE - oil	A-65682	x	1
47	VALVE - check	A-65515	x	1
48	SCREW - fil., 8-32 x 5/8	80023-2	x x	1
49	VALVE - check	A-65502	x	1
50	CLAMP - oil line	65660-1	x	1
51	LINE - oil	A-65705	x	1
52	SCREW - soc, 8-32 x 5/16	80701	x	1
53	LEVER - choke	65490-2	x x	1
54	SHAFT - choke	65510	x x	1
55	GROMMET - "hi - lo"	58858	x x	1
56	SCREW - idle adjustment	63369	x x	1
57	SCREW - hex, 12-24 x 5/8	80676	x x	4
58	BUSHING - throttle handle	63400	x x	2
59	SLEEVE - spacer	65716	x x	1
60	BELLCRANK - choke	65511	x x	1
61	PIN - cotter	86301	x x	1
62	PIN - cotter	86324	x x	1
63	GASKET - throttle handle	63779-B	x x	1
64	GASKET - cylinder	63778	x x	1

HOMELITE XL-903E & EAM

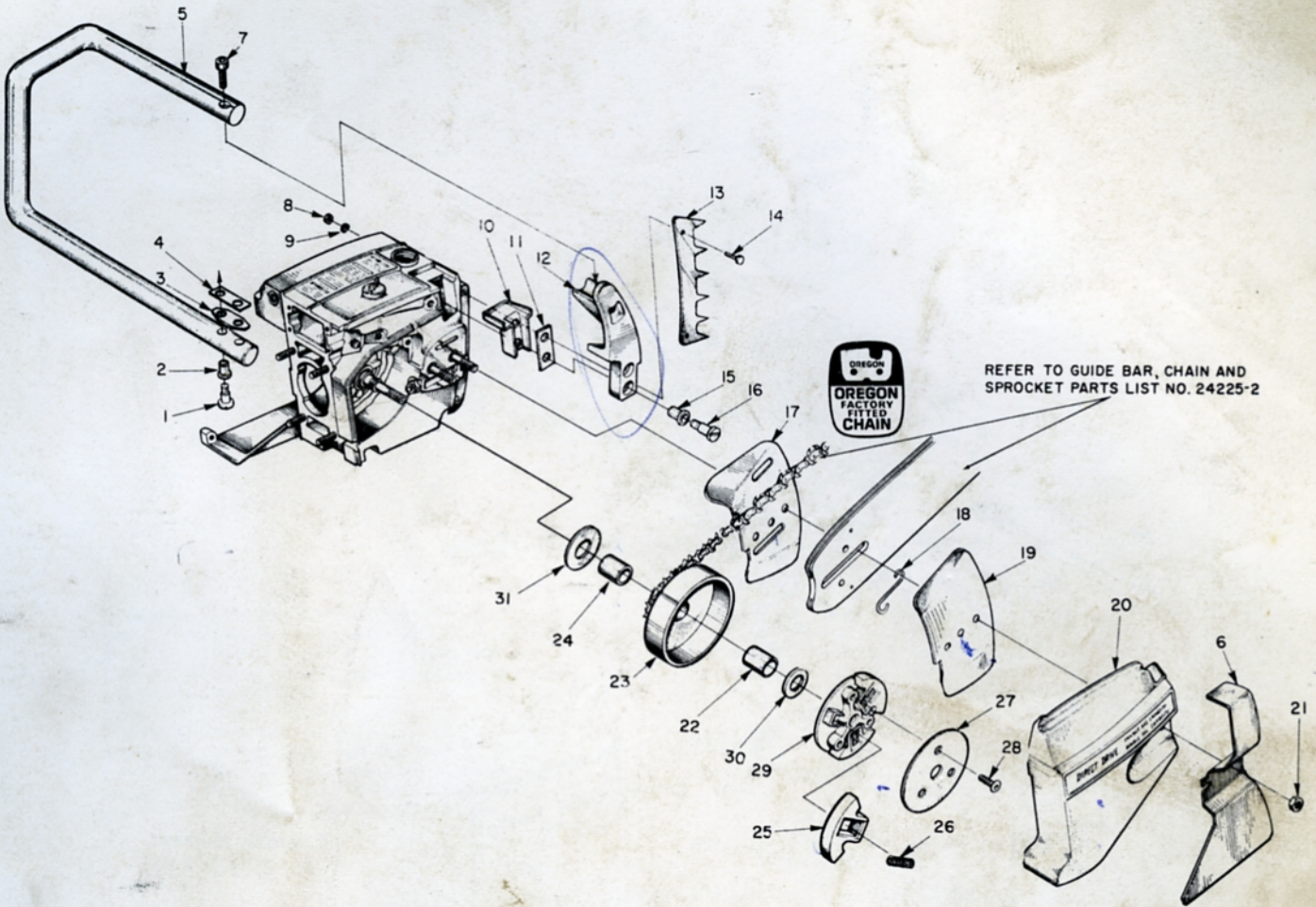


FIGURE 4

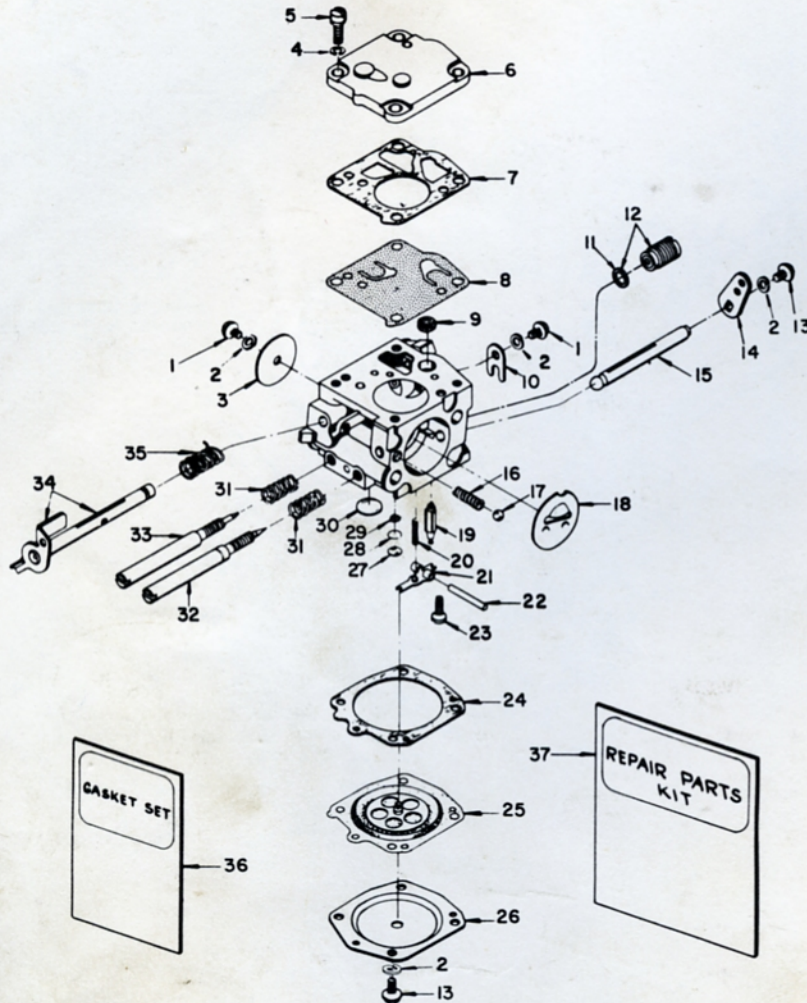
No.	Description	Part No.	XL 903	
			E	Qty.
1	SCREW - shoulder	65520	x x	2
2	GROMMET - handle bar	65518	x x	2
3	PLATE - handle bar	65599	x x	1
4	SPACER - handle bar	65542	x x	1
*5	HANDLE BAR - flush cut	A-65860-1	x x	1
	KIT - full wrap around (optional) ①	A-65894	x x	1
	Includes: HANDLE BAR - wrap around ①	A-65814-2	x x	1
6	GUARD - chain	64867-1	x x	1
	BRACKET - handle bar ①	65607-5	x x	1
	KIT - 3/4 wrap around (optional)	A-65902	x x	1
	Includes: HANDLE BAR	A-65900	x x	1
	BRACKET	65607-5	x x	1
	BRACE	63660	x x	1
	SCREW - hex, 12-24 x 3/4	80867	x x	1
7	SCREW - soc, 1/4-20 x 1	80428	x x	1
8	NUT - 12-24	81068	x x	2
9	WASHER - lock, #12	83056	x x	2
10	MOUNT - shock	65509	x x	1
11	PLATE - handle bar bracket	65598	x x	1
12	BRACKET - handle bar (flush cut)	65607-2	x x	1
13	BUMPER - spiked	63549	x x	1

No.	Description	Part No.	XL 903	
			E	Qty.
14	SCREW - hex, 12-24 x 3/4	80867	x x	2
15	GROMMET	65519	x x	2
16	SCREW - shoulder	65521	x x	2
17	PLATE - guide bar (inner)	58781	x x	1
18	SPRING - guide bar	64448	x x	1
19	PLATE - guide bar (outer)	58782	x x	1
20	COVER - drivecase	63009-2	x x	1
21	NUT - 5/16-18	81196	x x	2
22	BEARING - needle	64124	x x	1
23	SPROCKET & DRUM			
	Standard - 3/8" pitch, 8 tooth	A-65885	x x	1
	Optional - 3/8" pitch, 7 tooth	A-65884	x x	1
	.404" pitch, 7 tooth	A-65886	x x	1
	.404" pitch, 8 tooth	A-65887	x x	1
24	RACE - inner	64129	x x	1
25	SHOE - clutch	64569	x x	3
26	SPRING - clutch	65842	x x	3
27	COVER - clutch	63051-1	x x	1
28	SCREW - hex, 1/4-20 x 1/2	64471	x x	3
29	PLATE - clutch	63053-2	x x	1
30	WASHER - thrust (outer)	63462	x x	1
31	WASHER - thrust (inner)	63463	x x	1

*Denotes new parts

① Wrap around HANDLE BAR and special BRACKET also requires #63660 BRACE (not shown) mounted on drivecase cover. Attach BRACE to HANDLE BAR with one #80867 SCREW.

HOMELITE XL-903E & EAM



Assembly Number
A-65578

TILLOTSON MODEL HS-56A

No.	Part No.	Description	Qty.	No.	Part No.	Description	Qty.
1	80264	† SCREW - rd. hd., 4-40 x 3/16	2	19	59717	† NEEDLE - inlet	1
2	83008-1	† WASHER - lock, #4	4	20	55759	† SPRING - control lever	1
3	25050	SHUTTER - throttle	1	21	59716	† LEVER - inlet control	1
4	83024	WASHER - lock, #6	1	22	58977	† PIN - control lever fulcrum	1
5	80275	SCREW - fil. hd., 6-32 x 3/8	4	*23	65798	† SCREW - oval hd., 4-40 x 1/4	1
6	58975	COVER - fuel pump diaphragm	1	24	58978	GASKET - main diaphragm	1
7	58981	GASKET - pump diaphragm	1	25	58988	† DIAPHRAGM - main control	1
8	58980-R	† DIAPHRAGM - fuel pump	1	26	58979	COVER - main diaphragm	1
9	58974	† SCREEN - fuel inlet	1	27	58994	† PLUG - extension (small)	1
10	58982	CLIP - throttle shaft retaining	1	28	57819	RING - retaining	1
11	74060	GASKET	1	29	59500	SCREEN - channel	1
*12	A-65801	VALVE - governor	1	30	58991	† PLUG - extension (large)	1
13	80591	SCREW - rd. hd., 4-40 x 1/4	5	31	73075	† SPRING - adjustment needle	2
*14	65800	LEVER - choke	1	32	63676	† SCREW - main adjustment	1
*15	65799	SHAFT - choke	1	33	63677	† SCREW - idle adjustment	1
16	73264	SPRING - choke friction	1	34	A-63345	SHAFT - throttle w/lever	1
17	25527	BALL - check	2	35	59460	† SPRING - throttle opening	1
18	58984	SHUTTER - choke	1	*36	65895	† GASKET SET	1
				*37	65896	REPAIR KIT	1
					63711	GASKET & DIAPHRAGM SET	1

† Indicates contents of Repair Kit.

* Denotes new parts.

HOMELITE XL-903E & EAM

ACCESSORIES

A-63540-A SPARK ARRESTOR ASSEMBLY

SPECIAL TOOLS-available on order

A-23937-B	COMBINATION WRENCH	23987	SHIM - point gap
22828	PLIERS - piston snap ring	A-23934	WRENCH - clutch
23528	WRENCH - socket screw (conn. rod)	A-23841-A	WRENCH - insert (guide bar stud)
23955	PLUG - bearing installation (conn. rod)	A-23960	PULLER - rotor
A-23965	JACKSCREW	23420	PLUG - bearing installation (sprocket)
23136-1	BODY - jackscrew	23956	PLUG - bearing & seal installation (back plate)
22820-4	COLLAR - bearing	A-23962	REMOVER - bearing (back plate)
23846-1	ANVIL - crankshaft installation	23846-2	ANVIL - bearing disassembling (back plate)
23971	SLEEVE - seal protecting (crankcase)	24006-1	PLATE - crankshaft aligning
23972	SLEEVE - seal installation (crankcase)	24230	DRIVER - hand ("pozidriv")
23957	PLUG - seal installation (crankcase)		

Paint

22771	SPRAY CAN - red
23318	SPRAY CAN - blue
23560	SPRAY CAN - white
23343	SPRAY CAN - green
22772	SPRAY CAN - black